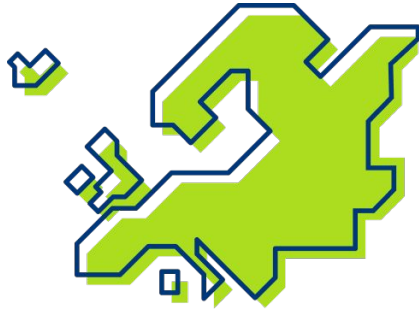


# Forge the future of European open source



Linux Foundation Europe Membership Overview  
[linuxfoundation.eu](https://linuxfoundation.eu)

# What is Linux Foundation Europe?



## **Neutral governance entity in Europe**

Belgium based non-profit to provide a local neutral asset ownership and Europe-aware project governance. Entry-point to the global LF federation.

## **Focus on Europe-strong projects**

Support the creation and growth of collaborations between individual contributors, private and public sector on OSS, OSH, Open Standards, Open Data.

## **LF Europe Membership Benefits**

Host a project in Europe, fund it in local currency & join our Linux Foundation Europe advisory board.

## **Open to any organization in the world**

And free for existing Linux Foundation Members through reciprocal Membership at no cost.

# Linux Foundation Europe Participants

Linux Foundation Europe was [launched in September 2022!](#)

## Platinum

SAMSUNG Red Hat

Qualcomm intel



## Gold

SONY CARDANO FOUNDATION

Alibaba.com accenture



LONDON STOCK EXCHANGE

## Silver



## Associate



## Unique cross-border landscape

Europe is the only region a supranational sovereign entity drives shared goals as well as rules of the road for European wide collaboration.

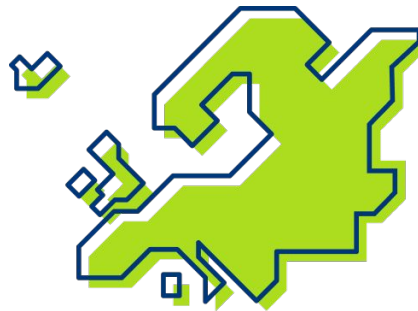
## The intersection of social and OSS

EU and European nations are leader in promoting open source and vision of digital commons to achieve ambitious Europe-wide policy goals.

## Local priorities, global challenges

The European ecosystem of OSS adopters and contributors, and their priorities, is unique. But many OSS challenges are global, e.g. sustainability.

# Why Linux Foundation Europe?





“

**One of our goals at SUSE is to provide the freedom and the ability to innovate everywhere. We are committed to open source, its power and its ongoing growth throughout the world. That continued growth demands new and stronger collaboration, facilitated by open source foundations that are also able to service projects rooted in Europe. Founded in Europe 30 years ago and now publicly listed there, SUSE is pleased to support the creation and launch of the Linux Foundation Europe.**

*Thomas Di Giacomo, Chief Product and Technology Officer at SUSE*

”

# Linux Foundation Europe Projects

## OpenWallet Foundation (OWF)

The OWF is a consortium of companies and non-profit organisations collaborating to drive global adoption of open, secure and interoperable digital wallet solutions as well as providing access to expertise and advice through our Government Advisory Council.

The OWF aims to set best practices for digital wallet technology through collaboration on standards-based OSS components that issuers, wallet providers and relying parties can use to bootstrap implementations that preserve user choice, security and privacy.



**OpenWallet**  
FOUNDATION

Join

Participate

# Linux Foundation Europe Projects

## **RISE - RISC-V Software Ecosystem**

The RISC-V Software Ecosystem (RISE) project is a collaborative effort led by industry leaders with a mission to accelerate the development of open source software for the RISC-V architecture.

### **Mission**

- Accelerate the development of open source software for RISC-V.
- Raise the quality of RISC-V Platform implementations.
- Push the RISC-V Software ecosystem forward and align ecosystem partners' efforts



[Participate](#)

# LF Europe Projects

## Project Sylva

Project Sylva was born out of the desire to reduce complexity and accelerate cloudification of the network whilst complying with the EU's privacy, security, and energy efficiency requirements.

Five European carriers (Telefonica, Telecom Italia, Orange, Vodafone, Deutsche Telekom) and two vendors (Ericsson and Nokia) formed the Sylva project to address challenges associated with telco and edge use cases within the EU and globally.

Sylva main objective is to release a cloud native infrastructure stack to host Telco (5G, OpenRAN, CDN, etc.) and Edge use cases.



Join

Participate



# Linux Foundation Europe Projects

## Servo

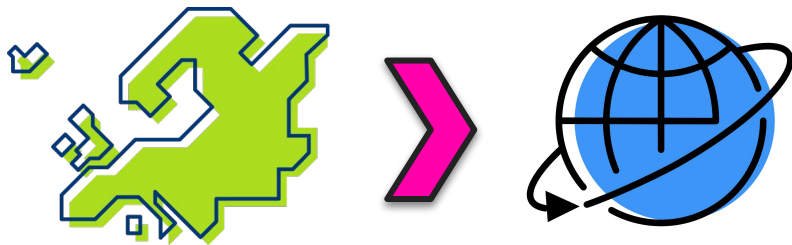
Servo is an independent, modular web rendering engine created by Mozilla Research in 2012. It was later transferred to the Linux Foundation and then to Linux Foundation Europe in 2023.

Written in Rust, Servo utilizes the language's memory safety properties and concurrency features. It actively contributes to web standards, identifying issues, submitting tests, and co-editing new standards. Servo drives the progress of the web platform while employing reusable, modular technologies that implement web standards.



[Participate](#)

# Collaborate locally, innovate globally



## **Engage with the local Community**

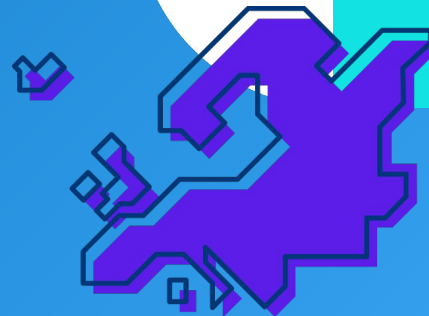
Expand local presence and create venues to solicit input and interaction from all European community constituents.

## **Advocate for European collaborations**

Support the creation and acceleration of projects centered on European technology, industry and mission-driven collaboration opportunities as uncovered by the World of OSS research.

## **Bring European tech to the global scale**

Leveraging LF global federation, expand the scope of collaborations into global (de-facto) standards and industry collaborations.



# Linux Foundation Europe Membership Benefits and Tiers



“

**Our members are among the pioneers of digital innovations from cloud to AI. They serve as a guiding force that fuels the growth of our projects and the creation of new markets and categories.**

”

*Jim Zemlin, Executive Director of the Linux Foundation*

## Host a project in Europe

Participants can [stand up projects in Europe](#), based on open governance powering the largest global OSS collaborations.

## Join LF Europe Advisory Board

Linux Foundation Europe Participants get access to the [LF Europe Advisory Board](#).

## LF Member Summit Europe

Invite-only access to the annual [LFMS Europe event](#)

## Interact locally, in local currency

[Make LF Europe](#) your primary billing center for your LF Membership, in local currency (€).

## Join the LF at no additional cost<sup>(\*)</sup>

And support the [largest shared technology investment](#) in the world.

<sup>(\*)</sup> Requires separate, no cost, [Membership agreement](#) with the Linux Foundation.

# Linux Foundation Europe Membership Benefits



# Linux Foundation Europe Advisory Board

[linuxfoundation.eu/en/about/advisory-board](https://linuxfoundation.eu/en/about/advisory-board)



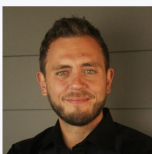
Philipp Ahmann

Product Manager -  
Embedded Open  
Source, BOSCH



Lucian Balea

Deputy Director of R&D  
and Open Source  
Director, RTE



Gabriele Columbro

GM, Linux Foundation  
Europe  
ED, FINOS



Debora Comparin

Standardization Expert,  
Thales  
Chair of OSIA Initiative,  
Secure Identity Alliance  
(SIA)



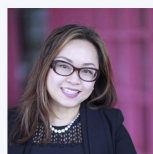
Philippe Ensarguet

VP of Software  
Engineering, Orange



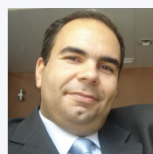
Greg Kroah-Hartman

Observer for Linux  
Kernel



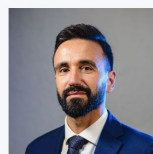
Anni Lai

Head of Open Source  
Operations and  
Marketing, FutureWei



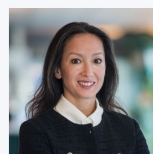
Gerado Lisboa

Board Chair, ESOP -  
Open Source Business  
Alliance Portugal



Paolo Mainardi

CTO and Founder,  
SparkFabrik



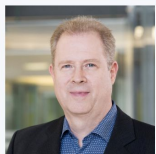
Sachiko Muto

Chair, OpenForum  
Europe  
Senior Researcher, RISE  
Research Institutes of  
Sweden



Felix Faassen

Open Source Program  
Lead, TomTom



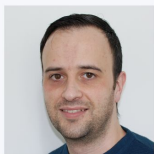
Peter Giese

Director of Open Source  
Program Office, SAP SE



Daniel Goldscheider

Observer for Open  
Wallet Foundation



Samuel Iglesias  
Gonsálvez

Director of GPU Driver  
Development, Igalia



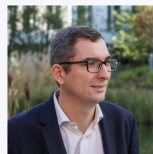
Max Körbächer

Founder & Cloud Native  
Advisor, Liquid Reply



Jacopo Nardiello

Founder & CEO, SIGHUP



Guillaume Névicato

Observer for Sylva



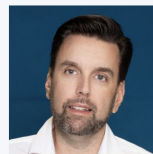
Cosmin Oprea

Architect, LSEG



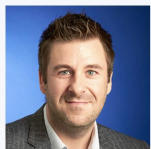
Timo Perala

Head of Open Source  
Service and Network  
Automation, Nokia



Alois Reitbauer

Chief Technology  
Strategist, Dynatrace



Alan Richards

Senior Engineering  
Director, GitLab



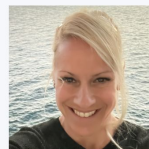
Phil Robb

Head of Ericsson  
Software Technology,  
Ericsson



Sebastian Scheele

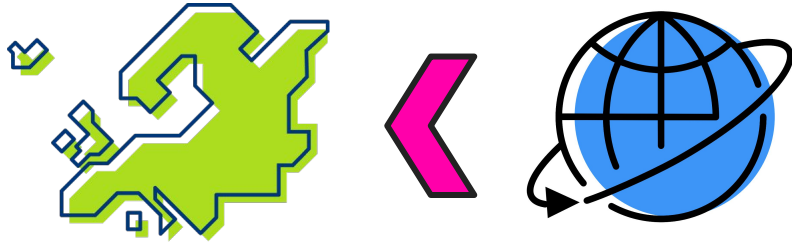
CEO, Kubermatic



Csilla Zsigri

Chief Strategy Officer,  
BTP

# Are you an existing Linux Foundation Member?



## Join Linux Foundation Europe at no cost

Linux Foundation Europe is open to any organization in the world. Existing Linux Foundation Members can [join Linux Foundation Europe](#) for free.

## Make Europe your primary billing center

By joining Linux Foundation Europe you have the option to use LF Europe as billing center for your Linux Foundation Membership. Reach out to Member Success at [membersupport.linuxfoundation.eu](mailto:membersupport.linuxfoundation.eu) to update your preferences.

# Your Membership Supports

- Educating developers to good open source practices.
- Linux Foundation organizations such as LetsEncrypt.org, Kernel.org, overall development of the Linux kernel, and salaries for full-time fellows such as Linus Torvalds, Greg Kroah-Hartman, and Shuah Khan.
- Open source security initiatives and funds critical security research, providing developers access to security tooling, free secure coding education, security audits, and facilitating an industry response to security challenges.
- Travel and mentorship funding to help train and engage future contributors to open source communities.
- Essential IP protection for open source, including our support for the Unified Patents open source zone that benefits all users and vendors using open source.
- Legal work to improve the quality (licensing, export controls, trademark programs, privacy programs, etc.) of our upstream projects that you incorporate into your products and solutions.
- Creation of best practices materials covering each stage of your open source journey. Materials include foundational value proposition materials, setting up and running an open source program office, compliance workflows, tooling, contribution practices, templates, and enterprise management practices.
- Educating developers to good open source practice.
- Operations spanning the United States, European Union, United Kingdom, Switzerland, China, Australia, and Japan.
- Research on open source, including our partnership with the Laboratory for Innovation Science at Harvard University on security and open source topics.
- Legal structures for projects to be created under a neutral governance model.
- Training and certification course creation and development, supporting millions of developers worldwide.
- Diversity and inclusion programs, allowing us to offer registration scholarships to LF events, mentorship programs, diversity & socioeconomic need-based travel funding (not limited to LF events).
- Onsite programs at LF events supporting diversity & inclusion efforts that your membership supports, including free childcare, onsite nursing room/milk storage, onsite prayer rooms, pronoun and preferred communication badge stickers, complimentary non-alcoholic beverages at evening events, diversity social events, complimentary kids day coding workshop, conference session videos freely available online, and other initiatives.



# Your Membership Supports

Call for Code with The Linux Foundation: a worldwide, multi-year initiative inspiring developers to solve pressing problems with sustainable solutions.

- 500,000+ participants in Call for Code since its launch in 2018
- 180 nations represented in the Call for Code community
- 15,000 applications built for disaster resiliency, racial justice, and climate change mitigation
- 14 official open source projects hosted by The Linux Foundation
- 70+ GitHub repositories.



FOR RACIAL JUSTICE



Liquid Prep

LIQUID PREP



Rend-o-matic

REND-O-MATIC



OpenEEW

OPEN EARTHQUAKE  
EARLY WARNING



INTELLIGENT SUPERVISION  
ASSISTANT FOR CONSTRUCTION

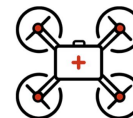


PYRRHA



CLUSTERDUCK  
PROTOCOL™

CLUSTERDUCK  
PROTOCOL



DRONEAID

# Example: Europe-centric OSS research!



Download the report!

# Membership tiers and dues

**Platinum**

**€500,000/year**

**Gold**

**€100,000/year**

**Silver**

**Silver Fee Scale Based on Consolidated Employees**

5,000 Employees & Above: **€20,000**

Between 500 and 4,999: **€15,000**

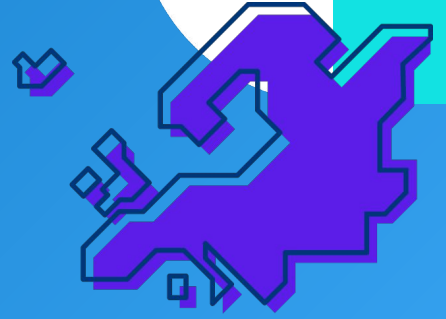
Between 100 and 499: **€10,000**

Between 1 and 99: **€5,000**

**Associate**

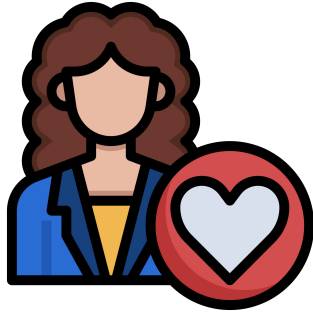
**Free**

**Restricted to non-profits, academic and governmental institutions**



# Why should you engage with Linux Foundation Europe?

# Individual contributors



SEE LF EUROPE PROJECTS

## Contribute on a level playing field

Through transparent governance which works for all community constituents

## Supercharge your project

Give your project the best chances to make it on a global scale, building a sustainable, global community around your project with our support.

## Influence the Community

Influence the community direction towards greater technology and social innovation outcomes.

# Corporate contributors



JOIN LF EUROPE

## Join global technology leaders

In shaping the direction of open source worldwide, by fostering both regional and global collaborations.

## Address industry-wide challenges

Collaborate with European peers to address long standing challenges in your specific area of technology, your industry or region/country.

## Foster a sustainable ecosystem

We all depend on open source, your business depends on open source. Your contributions accelerate the creation of an even more lively, sustainable commercial open source ecosystem in Europe.

## Public servants



PROPOSE A PROJECT

## Use OSS as an apolitical tool

to drive collective value and innovation and truly realize the vision of the digital commons across political seasons.

## Leverage open governance

to its full extent, beyond its transparency, ensure a level playing field across constituents, across borders, industries and individual citizens.

## Think global from the outset

When starting national or European wide collaborations. Open Source has the potential to address global technology challenges and Europe is a leader on several fronts.

# Ready to take the next step?

Apply for Linux Foundation Europe!

*Click the button above to proceed to our online membership application form.*

*Questions? Get in touch at [info@linuxfoundation.eu](mailto:info@linuxfoundation.eu)*



# Support the world's largest shared technology investment.



OVER 3,000 ORGANIZATIONS AROUND THE GLOBE ARE ACTIVE MEMBERS OF THE LINUX FOUNDATION. [JOIN TODAY.](#)