

Why host your Project in Linux Foundation Europe?

September 2022



The LF has become a global commons for holding community assets

850+ projects with community assets

- › Generally, no one company trusts another company to own assets for the community
- › Assets include logos, trademarks, domains, gerrit/GitHub, CLAs all seen as potential control points

Management of assets requires scale

- › Over 29,000 CLAs signed for project communities that decide to require a CLA
- › Over 1,000 project domains and DNS records
- › Over 700 trademarks registrations and applications, hundreds of unregistered marks
- › Over 15,000 source code repositories

Neutral source for managing leveraged fundraising

- › 3,000 unique member company relationships
- › Our communities raised over \$177 million in 2021 via 6,500+ invoices
- › Our communities spending funds generate 180,000 transactions annually

The LF is a broad scope foundation hosting openly developed technologies across many segments

Security

We are securing the internet via the world's largest certificate authority providing 50M free TLS certificates.



#1 SSL provider in the world

Networking

We are home to 8 of the top 10 open source networking projects in the world, backed by the majority of global network providers.



Support from carriers handling 70% of mobile subscribers

Cloud

We are creating a portability layer for the cloud, driving standards and developing reference tools for cloud native development.



Every relevant public cloud provider now supports Kubernetes

The LF is a broad scope foundation hosting openly developed technologies across many segments

Automotive

Our Automotive Grade Linux platform is deployed in millions of production vehicles covering infotainment, telematics, autonomous, etc.



Support from OEMs covering 50% of global auto shipments

Blockchain

We are creating a permissioned, secure distributed ledger that makes it easier to create cost-efficient, decentralized business networks.



50% of the Fortune top 50 enterprise blockchain deployments use Hyperledger

Web

We are providing the application development framework for next generation web, mobile, serverless, and IoT applications.



Node.js packages are downloaded over 1 billion times per day

Successful open collaboration ecosystems comes down to four core factors

Neutrality

No one company or organization can “take it away” from the community that forms around a project.

Open Governance Do-ocracy

The most successful projects that have stood the test of time have neutral, open governance models where those who do the work make the decisions in a defined governance model.

IP Clarity

Removal of IP uncertainty enables anyone to get involved as a contributor or implement as a user.

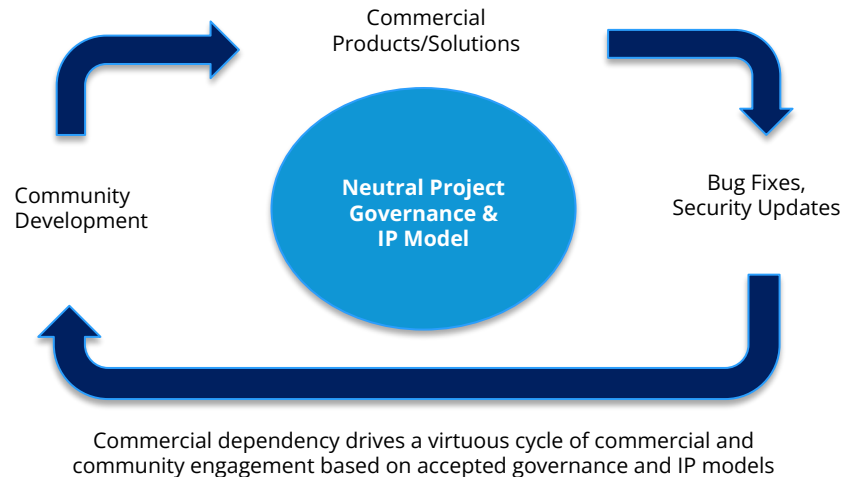
Commercial Support Ecosystem

Encouraging commercial engagement in the project leads to jobs, faster adoption, new contributions and features that address new use cases.

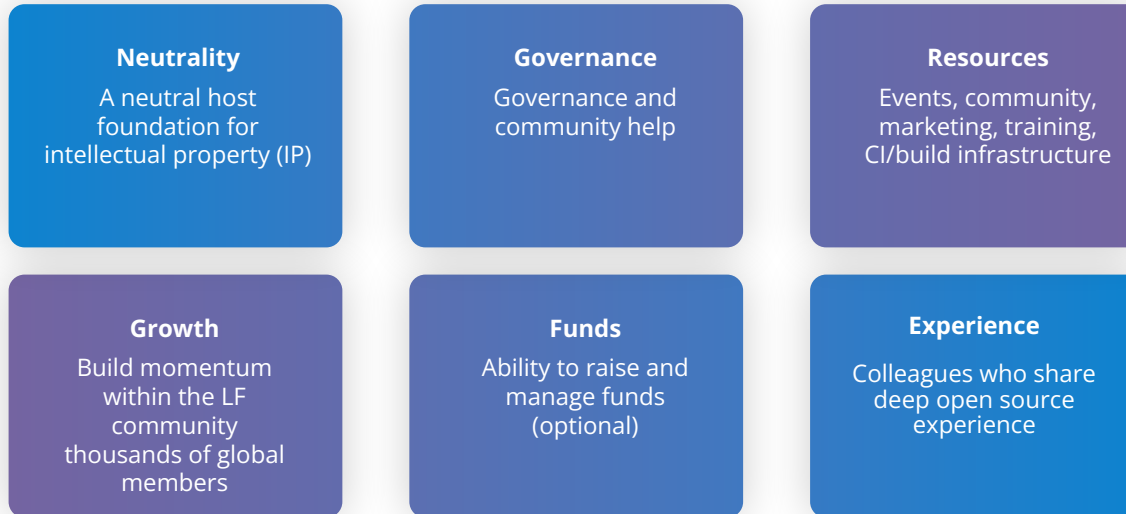
Projects support a continuous, sustainable ecosystem

Under the LF model projects become part of a continuous, sustainable ecosystem

- Sustainable projects have a developer community
- A developer community's technology is used in commercial solutions that profit businesses
- The businesses then participate and reinvest back into the project
- The businesses then hire developers to work in the community

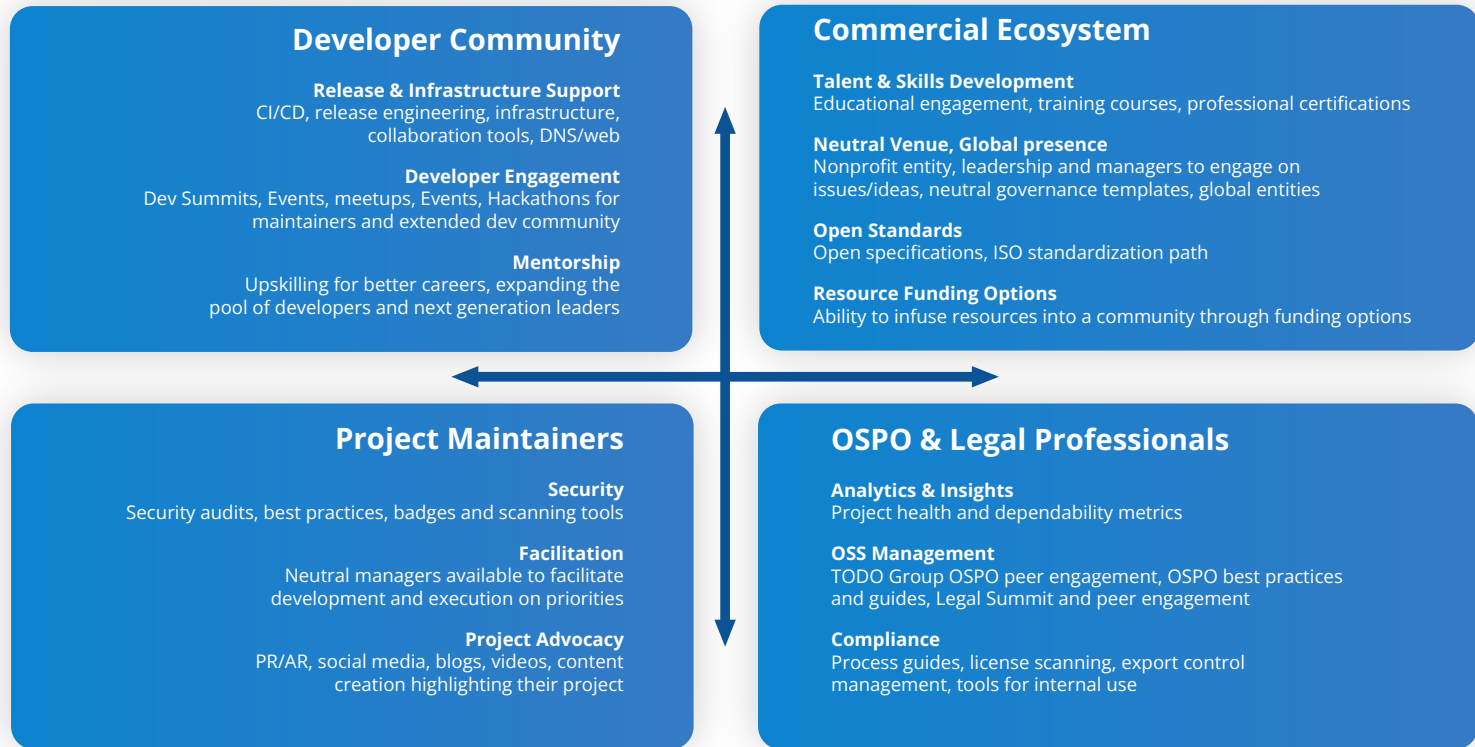


What do projects generally seek from the LF?



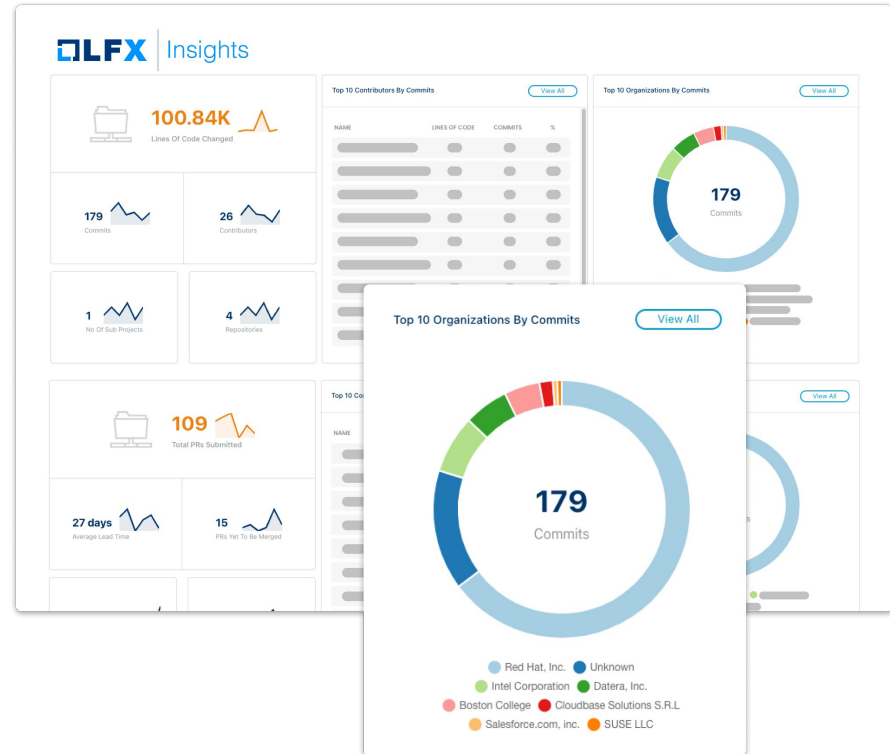
Projects often start with individual companies looking for a neutral home for their open source initiative, or individual developers seeking to elevate their project so that more companies and developers will participate.

The LF's Support Programs help communities succeed



Our LFX platform was purpose-built to deliver insights and automate routine community tasks

- Technical and ecosystem analytics about the projects you depend on
- Monitor contribution metrics across the entire project development lifecycle



With LFX, you can track your community trends and insights to measure community building and results



- Measure open source developer activity and project health
- Understand which projects are gaining traction, losing momentum, or shifting to alternative code bases

LF Projects: All Shapes and Sizes

- There is no “required” or “right” size or shape for a project at the LF.
- Some raise funding and have members, others do not.
- Some have dedicated staff to work on efforts, while others benefit from the community contributing to efforts.
- Some have thousands of developers, others start off with a dozen or so.
- Many are focused on code, while others are building specifications, standards or best practices.

How We Structure Projects

Community Project

These projects take advantage of the governance structure and back-end resources that the Linux Foundation provides to all hosted projects.

Examples

SPDX, FOSSology, CHAOSS, Linuxboot and OpenBMC.

Community Project + Funding

These projects benefit from community-raised funding to provide resources and infrastructure like enhanced code repositories, continuous integration systems, testing resources, conformance programs, and developer events. Membership or funding support for these projects is never required to contribute.

Examples

Let's Encrypt, Node.js, OpenAPI Initiative, and Open Mainframe.

Umbrella Community + Funding

These projects support several technical projects under the same funding structure and are focused on a technology area. This allows the community to pursue a strategic vision across a spectrum of opportunities while balancing demands on resources.

Examples

Automotive Grade Linux, Cloud Native Computing Foundation, Hyperledger, LF AI & Data and LF Networking.

There is no “one size fits all” approach to building a community for your open source project. The Linux Foundation exists to help you as an experienced, trusted advisor and facilitator.

The LF can structure different types of collaboration

- Open source software
- Open hardware
- Open standards
- Open data
- Open governance

Linux Foundation Project Hosting Requirements

- use an open source license for code (e.g. OSI approved);
- be supported by an LF member;
- allow neutral ownership of project assets such as a trademark, domain or GitHub account (the community can define rules and manage them);
- technical do-ocracy through separation of business governance from technical governance (we're flexible on the model) clearly documented in a charter;
- allow anyone to participate in the technical community, whether or not a financial member or supporter of the project (explicitly not pay-to-play)

Why host your Project in Europe?



September 2022

Hosting a Project with Linux Foundation Europe

The Linux Foundation supports [open collaboration communities](#), small to large.

Linux Foundation Europe enables communities to build open technologies, open standards, open hardware, open data, and open specifications [directly in Europe](#).

Linux Foundation Europe [projects are open for anyone in the world](#) to participate — no membership is required. Use the code, contribute, and participate freely.

Requirements for Hosted Projects

Linux Foundation Europe can host **both funded and unfunded** technical projects.

In order to host a project, Linux Foundation Europe requires:

- **Open governance** — we have templates based on years of LF experience if this is new for a particular project community!
- **Neutral asset ownership** (e.g., project assets such as names and accounts are held by LF Europe for the benefit of the community)
- Reliance upon an **open IP framework**
- **Community support** — the backing of at least one LF Europe Member

Benefits of Hosting a Project with LF Europe

We focus on hosting projects with sustainable ecosystems, and all hosted projects can take advantage of our core benefits at **no cost** to your community:

- Project is hosted out of Europe
- Neutral asset ownership
- Open governance
- Clear and open IP terms
- Proven-to-be successful policies (privacy, code of conduct, etc.)
- Access to European grants, where applicable
- [LFX collaboration tools](#)

How to Host a Project with LF Europe

If you have a project that you would like LF Europe to host, please reach out to us at formation@linuxfoundation.eu.

To launch a project, steps we follow typically involve:

1. Working with the community to define and draft governance for the project (technical and, if there is a funding component, funding governance)
2. Transferring project assets to Linux Foundation Europe to be held for the benefit of the community (e.g., project name, github account, etc.)
3. Preparation with the community on a launch announcement for the project

If you would like to talk to the project formation team on hosting a project with Linux Foundation Europe, please reach out to us at:

formation@linuxfoundation.eu



Europe

